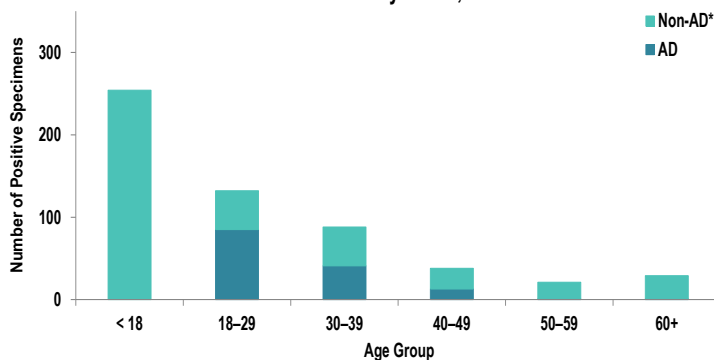


SUMMARY

Influenza activity in the Army population decreased from Week 9 to Week 10. In addition, RSV activity slightly increased. Two influenza-associated hospitalizations were reported during surveillance Week 10. Nationwide, influenza activity remains elevated, with 12.0% of specimens tested by clinical laboratories being positive for influenza A or B, according to the Centers for Disease Control and Prevention (CDC). Practice good health habits, such as eating a balanced diet and exercising daily to help your body fight influenza infection.

DEMOGRAPHICS

Positive Respiratory Specimen Results from Army MTFs by Age Group and Beneficiary Status, Week 10



AD: One hundred and forty-one positive respiratory specimens were collected from active duty (AD) service members (SMs) during Week 10; 60.3% (n=85) of the positive specimens were collected from SMs 18 – 29 years of age.

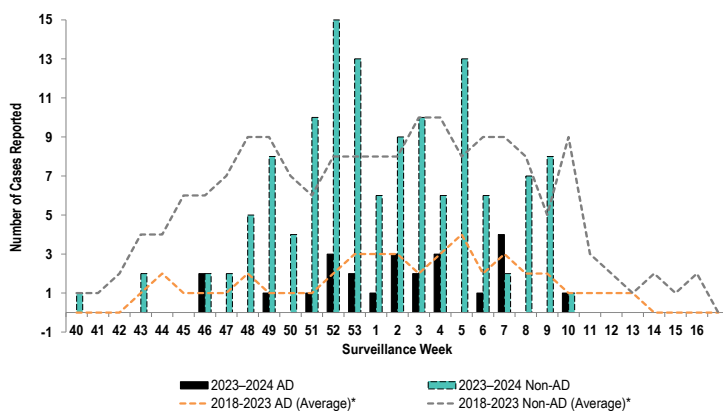
Non-AD: Four hundred and twenty-one positive respiratory specimens were collected from non-AD individuals during Week 10; 60.3% (n=254) of the positive specimens were collected from individuals under 18 years of age and 11.2% (n=47) from individuals who are 18 – 29 years old.

*Non-AD=All individuals that are not active duty service members.

The age and beneficiary status of some cases were not available. Therefore, all calculations involving these variables were conducted using only available data. Differences in total results, and age- and beneficiary status-specific results may be noted throughout the report.

INFLUENZA-ASSOCIATED HOSPITALIZATIONS

Army Influenza-Associated Hospitalizations Reported in DRSi by Onset Week



Two influenza-associated hospitalizations with an onset date in Week 10 were reported to the Disease Reporting System internet (DRSi). The season total thus far is 154 hospitalizations. The Week 10 average during the 2018 – 2023 seasons was 9 hospitalizations (with an average of 184 hospitalizations reported from the start of the season through Week 10).

The DRSi does not capture cases older than 65 years old for influenza-associated hospitalizations.

*Data from the 2020–2021 and 2021–2022 influenza seasons are not included in comparison calculations due to the unusually low incidence of influenza.

Data are preliminary and subject to change.

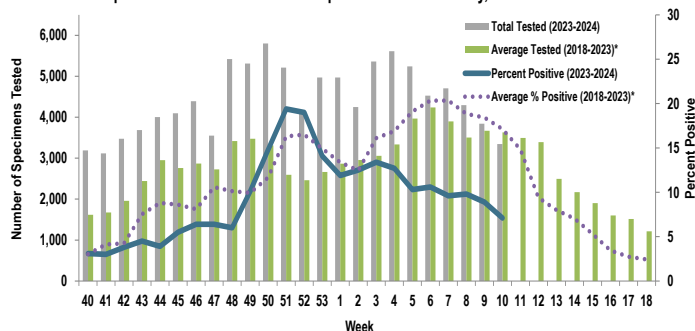
Disclaimer: The mention of any non-federal entity and/or its products is for informational purposes only, and not to be construed or interpreted, in any manner, as federal endorsement of that non-federal entity or its products.

Questions?
Email DCPH-A_DEP

INFLUENZA A ACTIVITY - ARMY

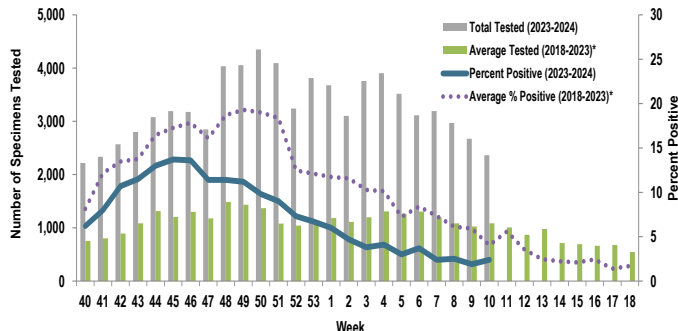
RSV ACTIVITY - ARMY

Proportion of Positive Influenza A Specimens for U.S. Army, 2023-2024



Of the 3,346 specimens tested for influenza A during Week 10, 7.1% (n=239) were positive. Influenza A activity decreased by 1.8%.

Proportion of Positive RSV Specimens for U.S. Army, 2023-2024



Of the 2,363 specimens tested for RSV during Week 10, 2.4% (n=56) were positive. RSV activity increased slightly.

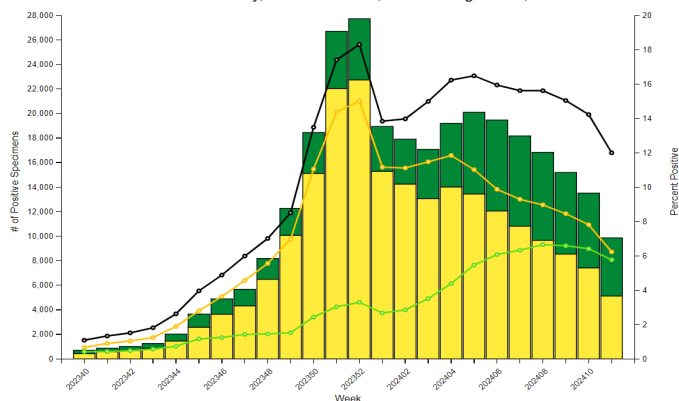
*Data from the 2020-2021 and 2021-2022 influenza seasons are not included in comparison calculations due to the unusually low incidence of influenza.

	Week 7	Week 8	Week 9	Week 10	Season Total	
Army MTF Laboratory Results, 2023-24	Adenovirus	14	12	14	15	305
	Enterovirus	39	39	48	30	1,066
	Influenza A	452	419	342	239	10,625
	Influenza B	304	271	244	190	4,478
	Parainfluenza	16	16	22	32	316
	RSV	76	74	52	56	5,862
	Negative	3,866	3,520	3,179	2,856	85,282
	Total	4,767	4,351	3,901	3,418	107,934

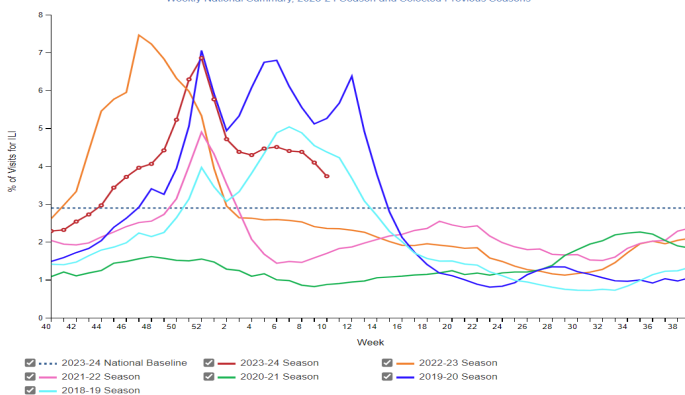
Of the 3,418 specimens tested during Week 10, 16.4% (n=562) were positive for any type of respiratory illness. Influenza A accounted for 42.5% (n=239) of the positive results, influenza B accounted for 33.8% (n=190), RSV accounted for 10.0% (n=56), parainfluenza accounted for 5.7% (n=32), enterovirus accounted for 5.3% (n=30), and adenovirus accounted for 2.7% (n=15). Additionally, the reported number of specimens tested decreased 12.4% from Week 9 to Week 10. Significantly more tests for influenza have been conducted this season compared to past seasons; 106,506 specimens have been tested for influenza A so far this season compared to the average of 72,043 specimens during the same time period in 2018-2023*.

INFLUENZA-LIKE ILLNESS (ILI) ACTIVITY - UNITED STATES

Influenza Positive Tests Reported to CDC by Clinical Laboratories, National Summary, 2023-24 Season, week ending Mar 16, 2024



Percentage of Outpatient Visits for Respiratory Illness Reported by The U.S. Outpatient Influenza-like Illness Surveillance Network (ILINet), Weekly National Summary, 2023-24 Season and Selected Previous Seasons

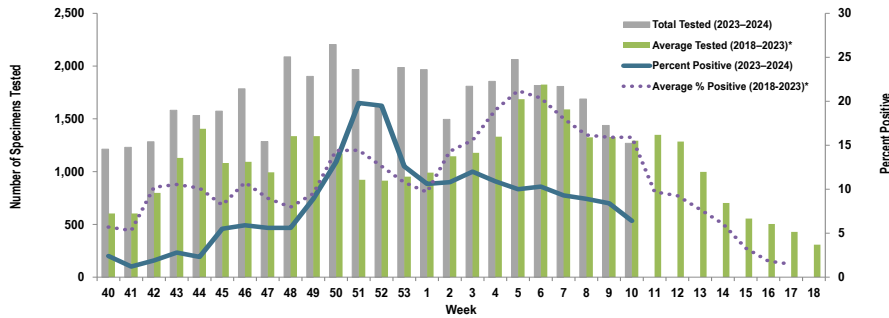


Nationwide in Week 10 (CDC's Week 11), incident ILI activity was 3.4%; this is above the national baseline of 2.9%. Additionally, a total of 82,202 specimens were tested for influenza by select clinical laboratories and submitted to the CDC; 9,862 (12.0%) were positive. Influenza A accounted for 51.9% (n=5,121) of the total positive specimens.

Locations providing Week 10 laboratory data as of 21 February 2024: Carlisle Barracks, Ft. Belvoir, Ft. Bliss, Ft. Campbell, Ft. Cavazos, Ft. Carson, Ft. Drum, Ft. Eisenhower, Ft. Eustis, Ft. Gregg-Adams, Ft. Huachuca, Ft. Irwin, Ft. Jackson, Ft. Johnson, Ft. Knox, Ft. Leavenworth, Ft. Leonard Wood, Ft. Lewis, Ft. Liberty, Ft. Meade, Ft. Moore, Ft. Novosel, Ft. Riley, Ft. Sam Houston, Ft. Sill, Ft. Stewart, Ft. Wainwright, Korea, Landstuhl Regional Medical Center, Redstone Arsenal, Tripler Army Medical Center, the U.S. Military Academy at West Point, and Walter Reed National Military Medical Center.

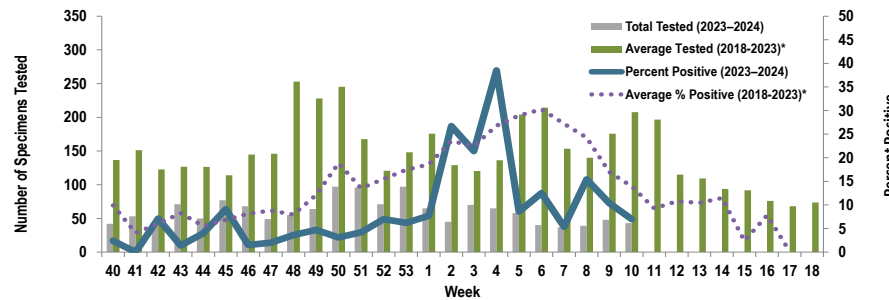
Proportion of Influenza A Positive Specimens by Week and Medical Readiness Command, 2023–2024 as Compared to 2018–2023*

Medical Readiness Command - East



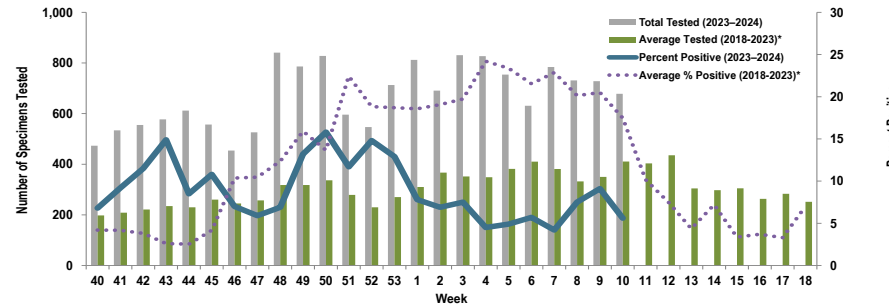
Week 10			
Age Group	AD	Non-AD	Season Total
< 18	0	21	1,245
18–29	18	7	815
30–39	10	7	582
40–49	3	3	384
50–59	0	5	297
60+	0	7	325
Total	31	50	3,648

Medical Readiness Command - Europe (Landstuhl Regional Medical Center)



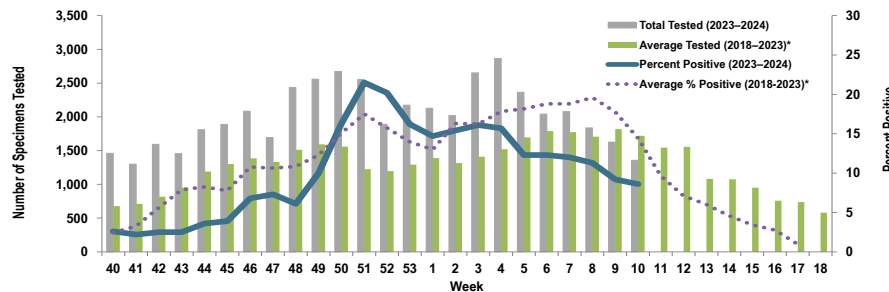
Week 10			
Age Group	AD	Non-AD	Season Total
< 18	0	2	45
18–29	0	0	24
30–39	0	1	22
40–49	0	0	17
50–59	0	0	9
60+	0	0	5
Total	0	3	122

Medical Readiness Command - Pacific



Week 10			
Age Group	AD	Non-AD	Season Total
< 18	0	9	370
18–29	15	4	506
30–39	2	4	263
40–49	1	1	107
50–59	0	2	60
60+	0	0	110
Total	18	20	1,416

Medical Readiness Command - West



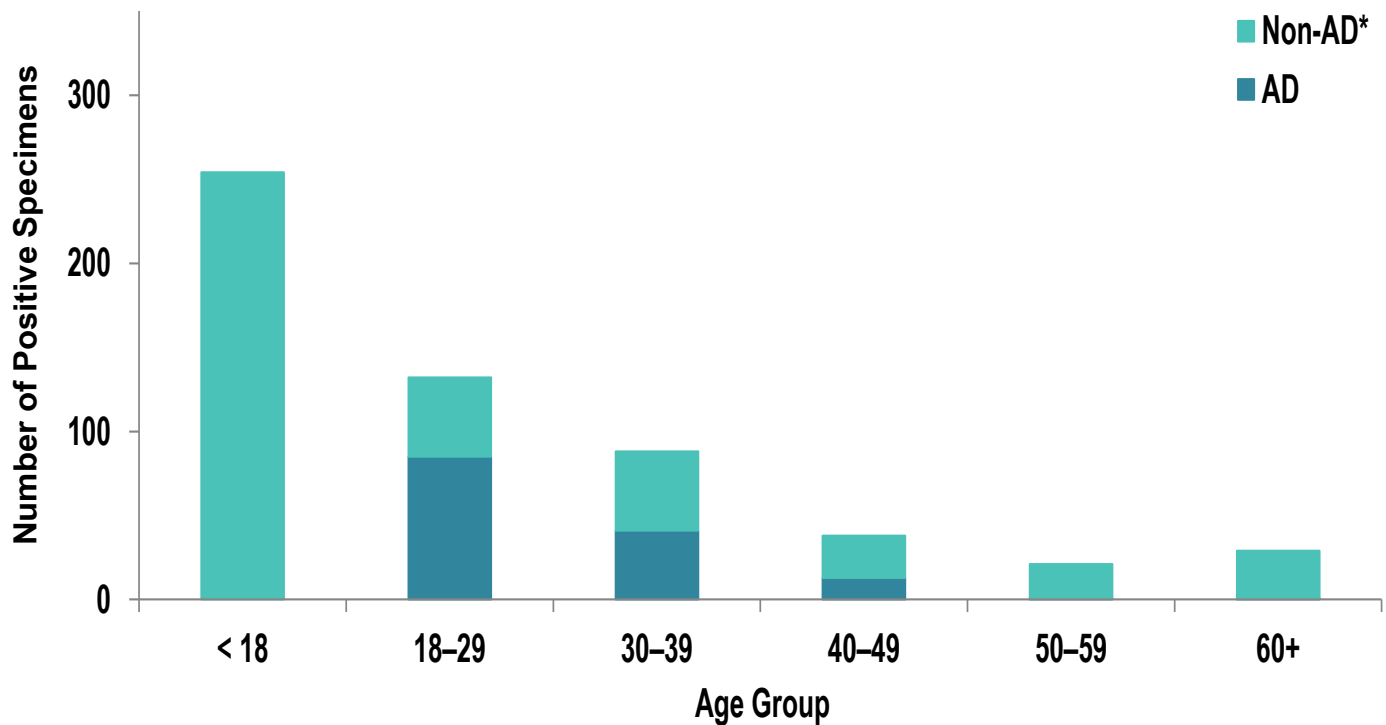
Week 10			
Age Group	AD	Non-AD	Season Total
< 18	0	31	1,883
18–29	19	16	1,394
30–39	7	10	869
40–49	4	10	491
50–59	1	6	368
60+	1	12	429
Total	32	85	5,434

*2018–2019, 2019–2020, and 2022–2023 influenza seasons. Data from the 2020–2021 and 2021–2022 influenza seasons are not included in comparison calculations due to the unusually low incidence of influenza.

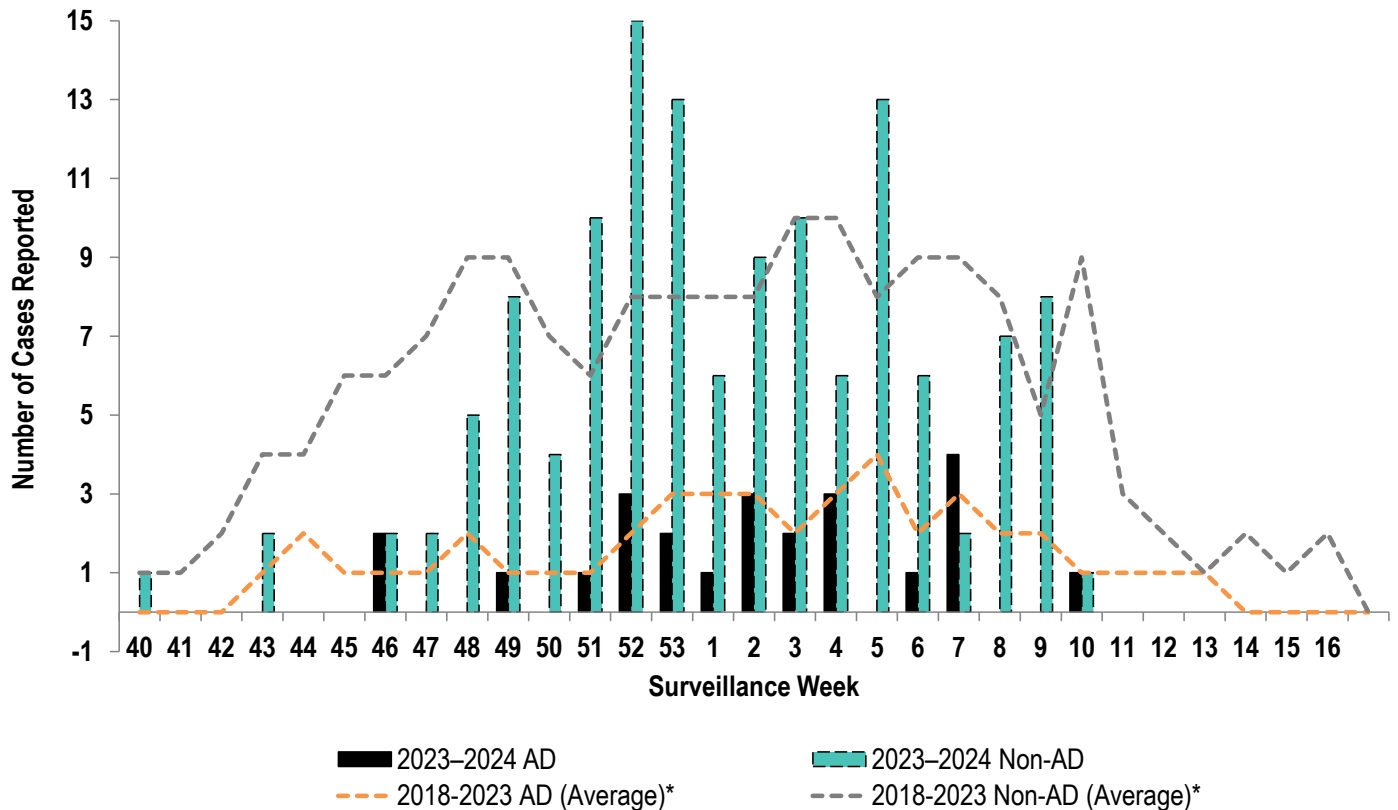
Number of Positive Influenza A Specimens by Region and Duty Status

Region	Week 7		Week 8		Week 9		Week 10	
	AD	Non-AD	AD	Non-AD	AD	Non-AD	AD	Non-AD
MRC-East	71	97	66	84	48	73	31	50
MRC-Europe	0	2	1	5	1	4	0	3
MRC-Pacific	13	20	33	22	37	29	18	20
MRC-West	77	172	79	129	58	92	32	85

Positive Respiratory Specimen Results from Army MTFs by Age Group and Beneficiary Status, Week 10

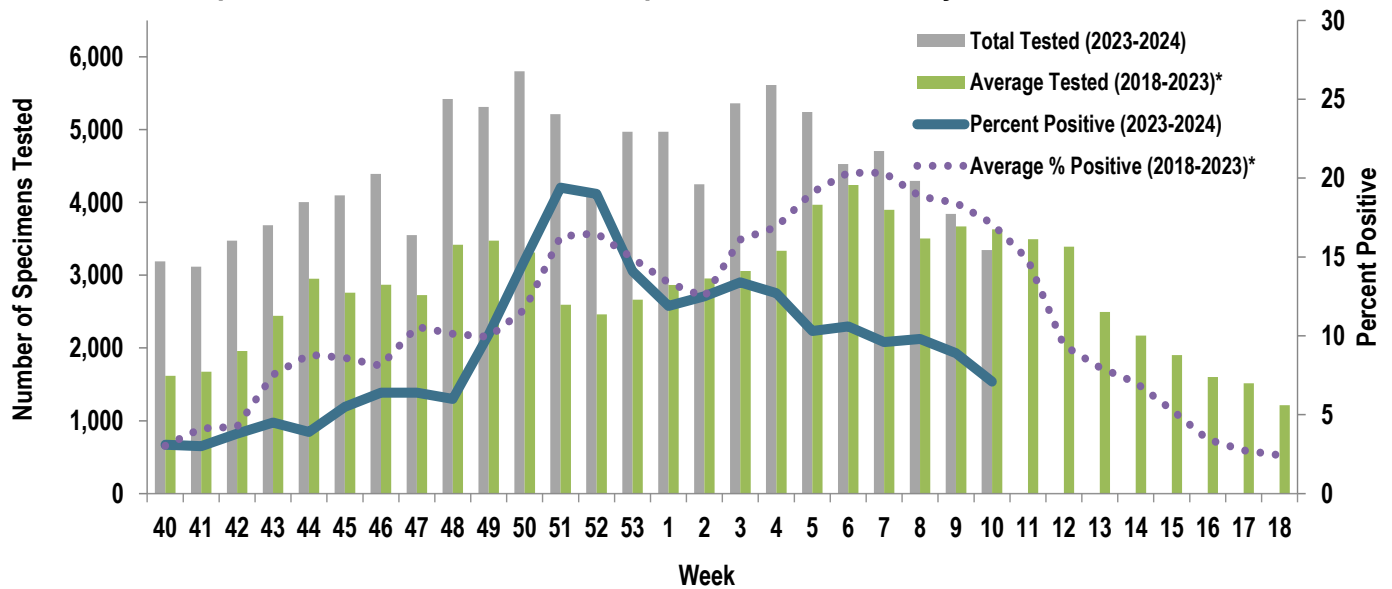


Army Influenza-Associated Hospitalizations Reported in DRSi by Onset Week



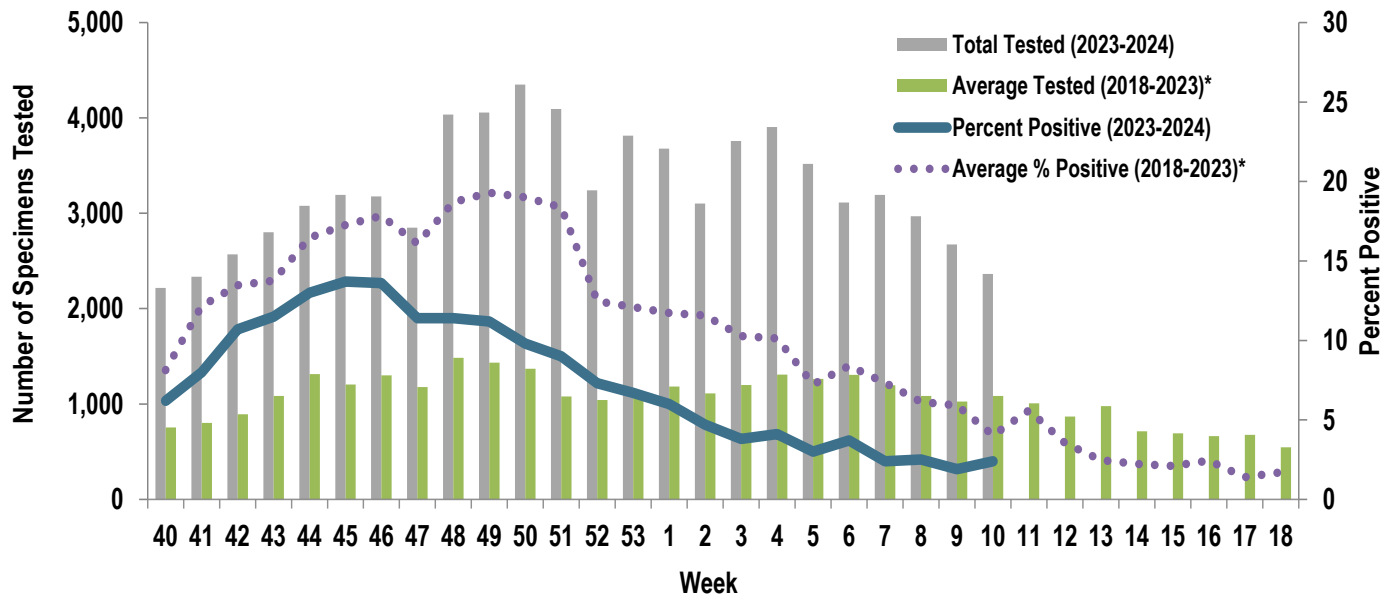
*2018-2019, 2019-2020, and 2022-2023 influenza seasons. Data from the 2020-2021 and 2021-2022 influenza seasons are not included in comparison calculations due to the unusually low incidence of influenza.

Proportion of Positive Influenza A Specimens for U.S. Army, 2023-2024



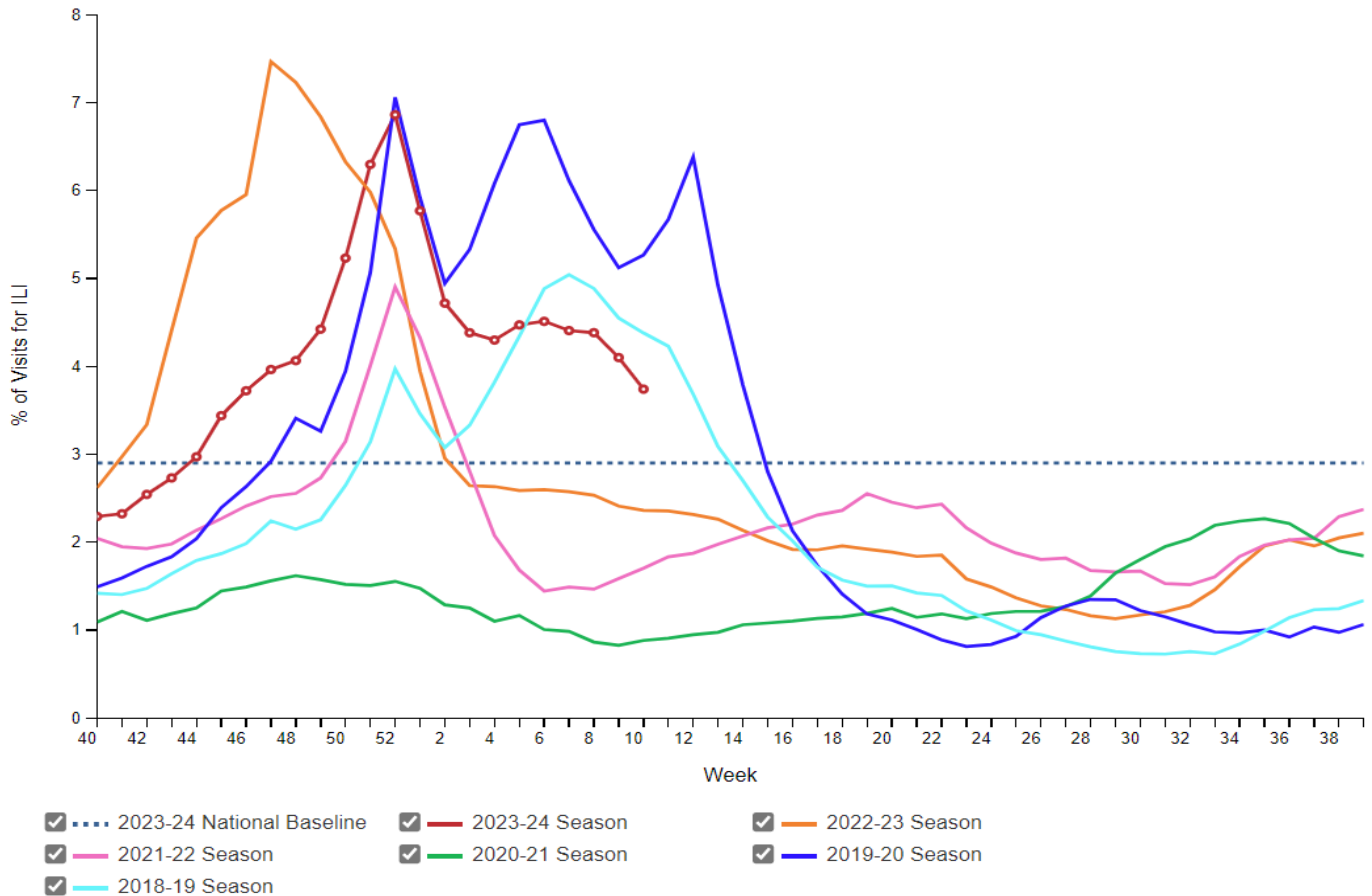
*2018–2019, 2019–2020, and 2022–2023 influenza seasons. Data from the 2020–2021 and 2021–2022 influenza seasons are not included in comparison calculations due to the unusually low incidence of influenza.

Proportion of Positive RSV Specimens for U.S. Army, 2023-2024



*2018–2019, 2019–2020, and 2022–2023 influenza seasons. Data from the 2020–2021 and 2021–2022 influenza seasons are not included in comparison calculations due to the unusually low incidence of influenza.

Percentage of Outpatient Visits for Respiratory Illness Reported by
The U.S. Outpatient Influenza-like Illness Surveillance Network (ILINet),
Weekly National Summary, 2023-24 Season and Selected Previous Seasons



Influenza Positive Tests Reported to CDC by Clinical Laboratories, National Summary, 2023-24 Season, week ending Mar 16, 2024

